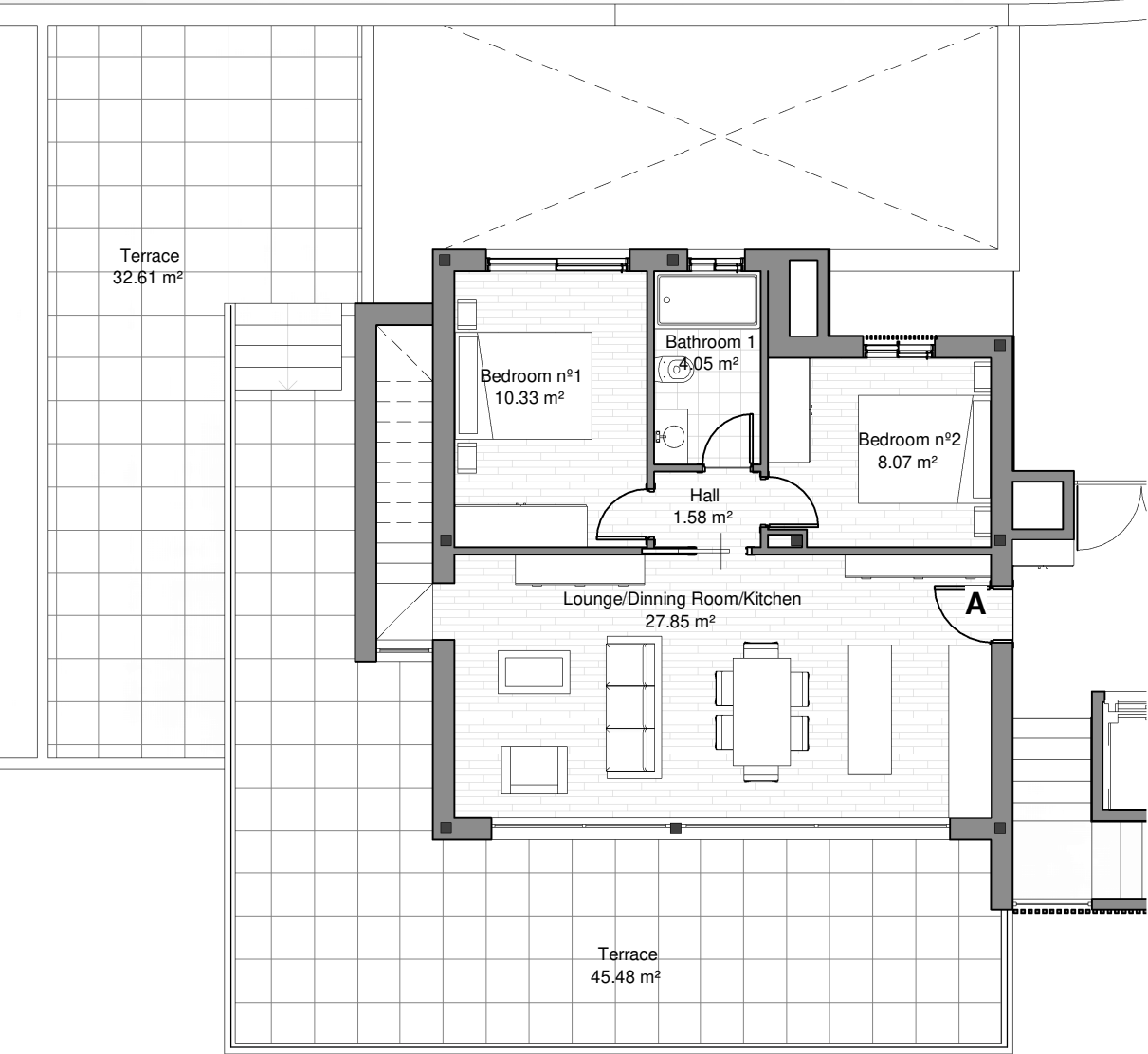
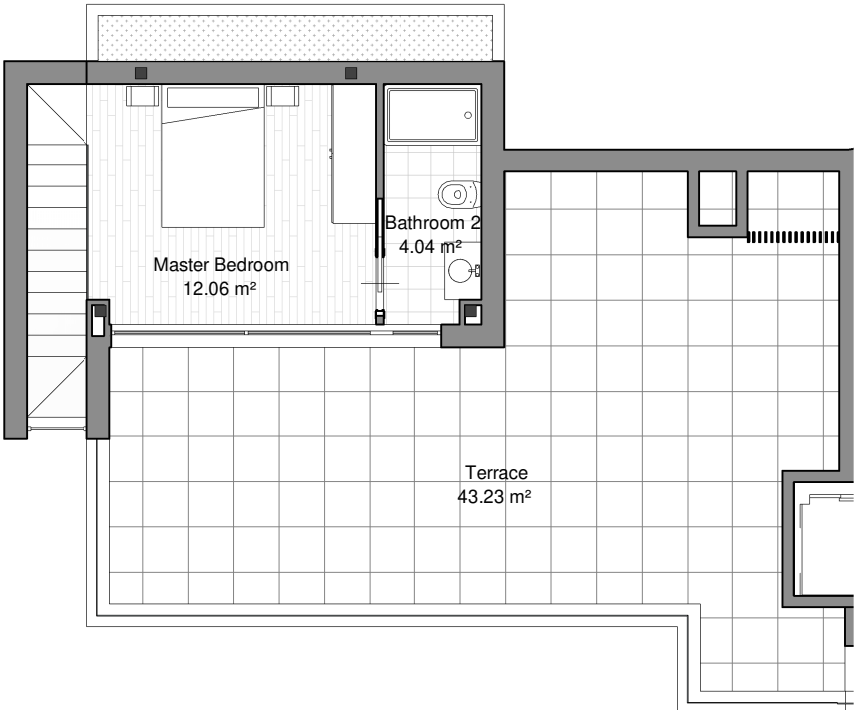


PORTAL 1. PENTHOUSE A.

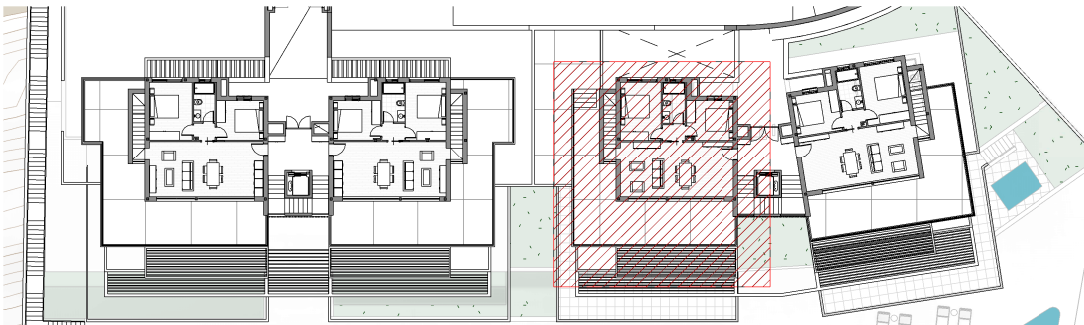
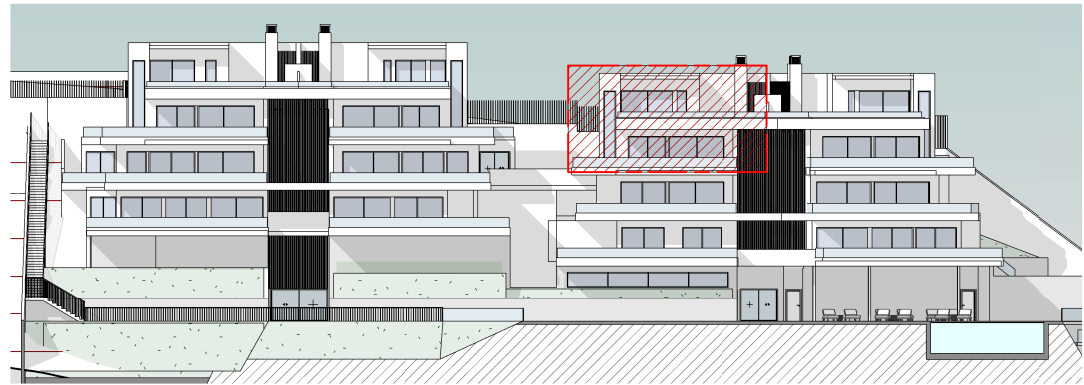
Distribution Floor 0 Penthouse A



Distribution Floor 1 Penthouse A



LOCATION OF FRONT ELEVATION AND FLOOR PLAN



PORTAL 1 - PENTHOUSE A	
Distribution	Surface Area (m²)
Lounge/Dinning Room/Kitchen	27,85
Hall	1,58
Bathroom nº 1	4,05
Bedroom nº1	10,33
Bedroom nº2	8,07
Master Bedroom	4,04
Bathroom nº 2	12,06
TOTAL USEFUL AREA	67,98

ACCORDING TO DECREE 218/2005			
Useful interior area (m2)	Useful exterior area. (10% int.)* (m²)	Total useful area (m²)	Total m2 Construction Inclu. Common Areas (m2)
67,98	6,80	74,78	103,34

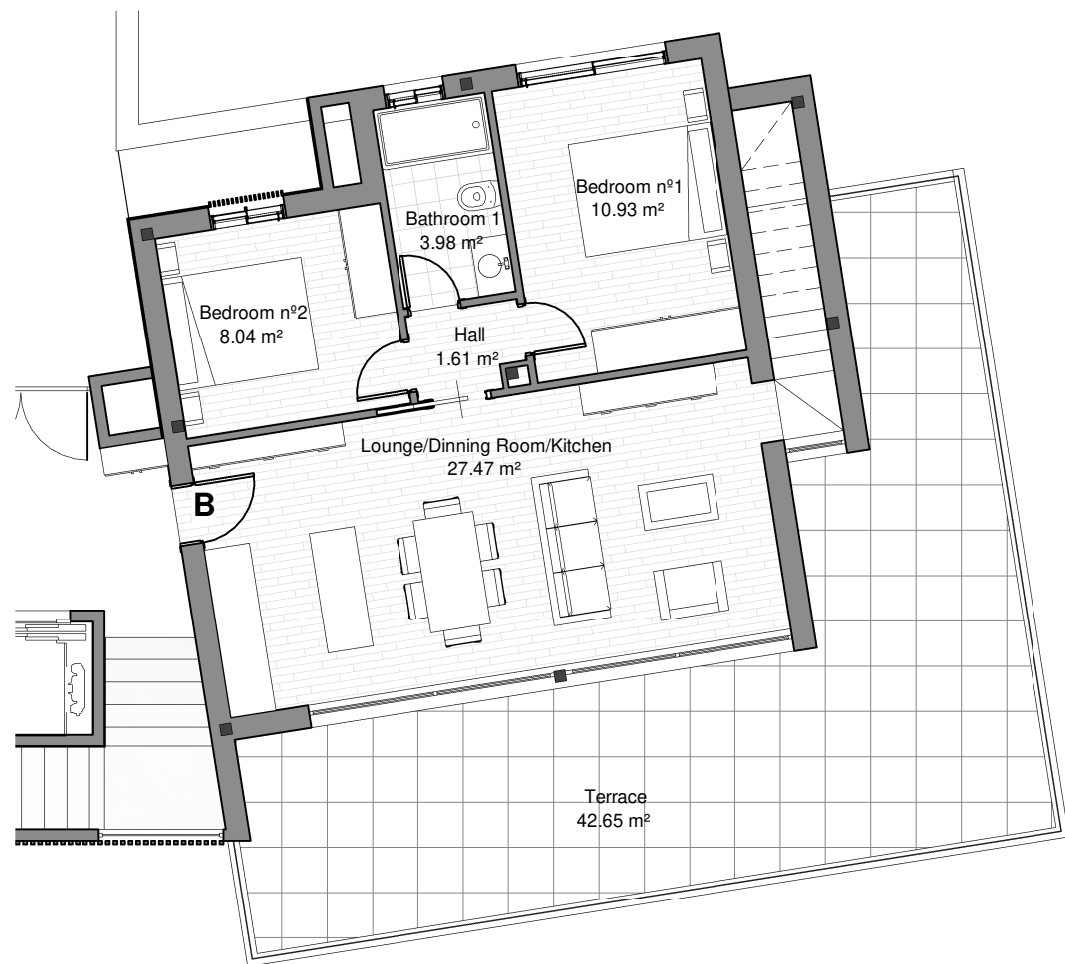
**According to Decree 218/2005, the useful surface area of private outdoor spaces will count at 50% (limited to 10% of the useful outdoor surface area).*

Total Terrace Surface Area	121,32
----------------------------	--------

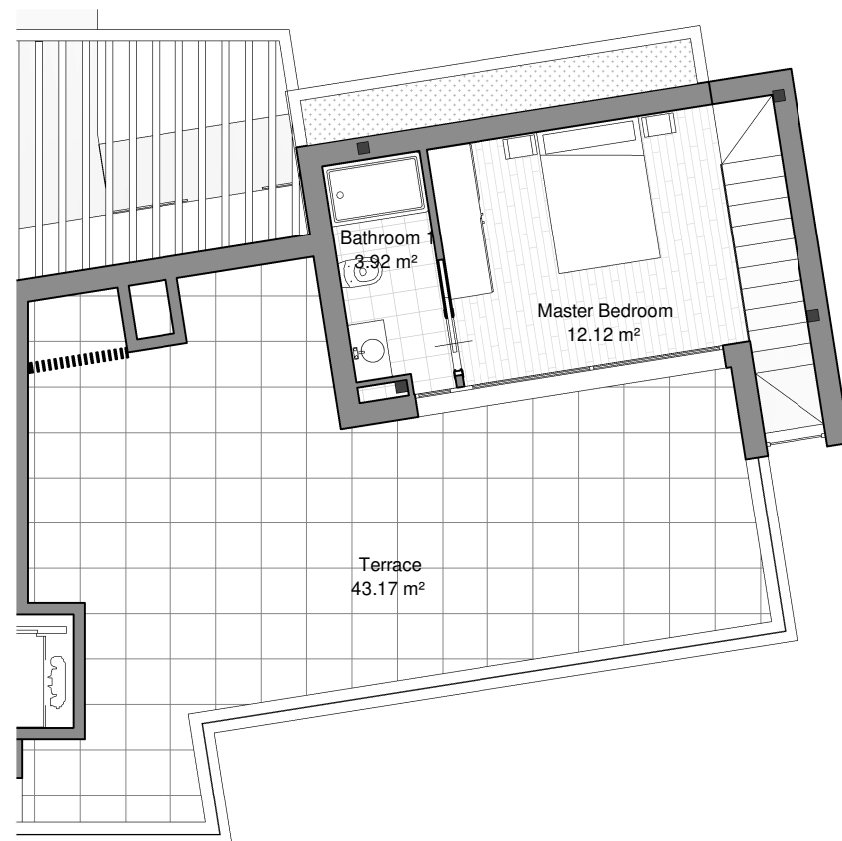
The information and graphic material that appear in this brochure are merely indicative, have no contractual value and may be subject to variations due to technical or legal requirements or at the initiative of the Faculty Management. The landscaping, decoration and furniture are merely decorative and not binding. The rest of the information referring to Decree 218/2005 of the Junta de Andalucía is available in our offices for consultation.

PORTAL 1. PENTHOUSE B.

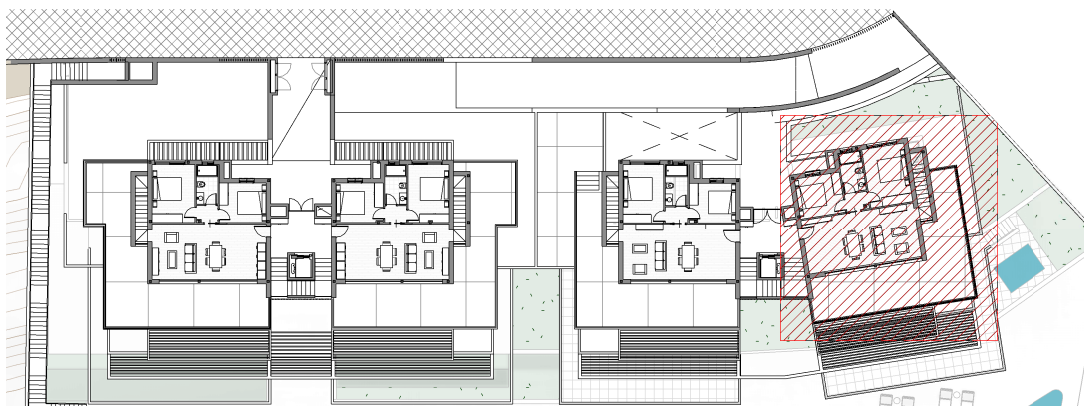
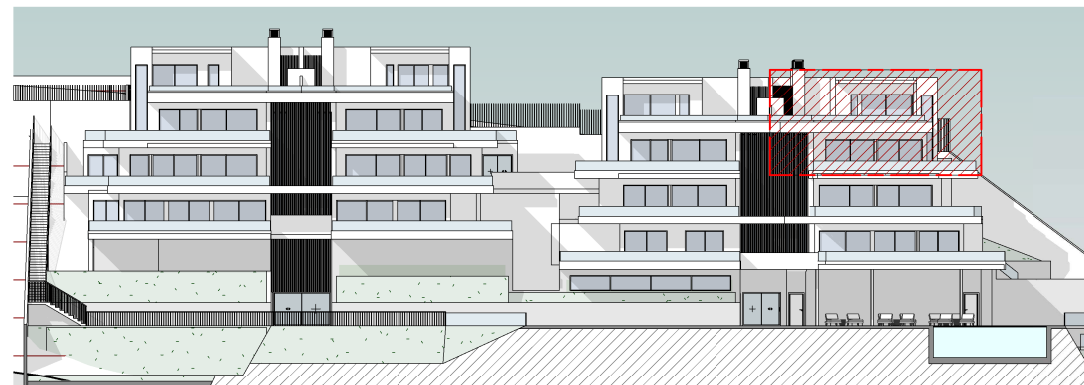
Distribution Floor 0 Penthouse B



Distribution Floor 1 Penthouse B



LOCATION OF FRONT ELEVATION AND FLOOR PLAN



PORTAL 1 - PENTHOUSE B	
Distribution	Surface Area (m²)
Lounge/Dinning Room/Kitchen	27,47
Hall	1,61
Bathroom nº 1	3,98
Bedroom nº1	10,93
Bedroom nº2	8,04
Master Bedroom	12,12
Bathroom nº 2	3,92
TOTAL USEFUL AREA	68,07

Total Terrace Surface Area	85,82
----------------------------	-------

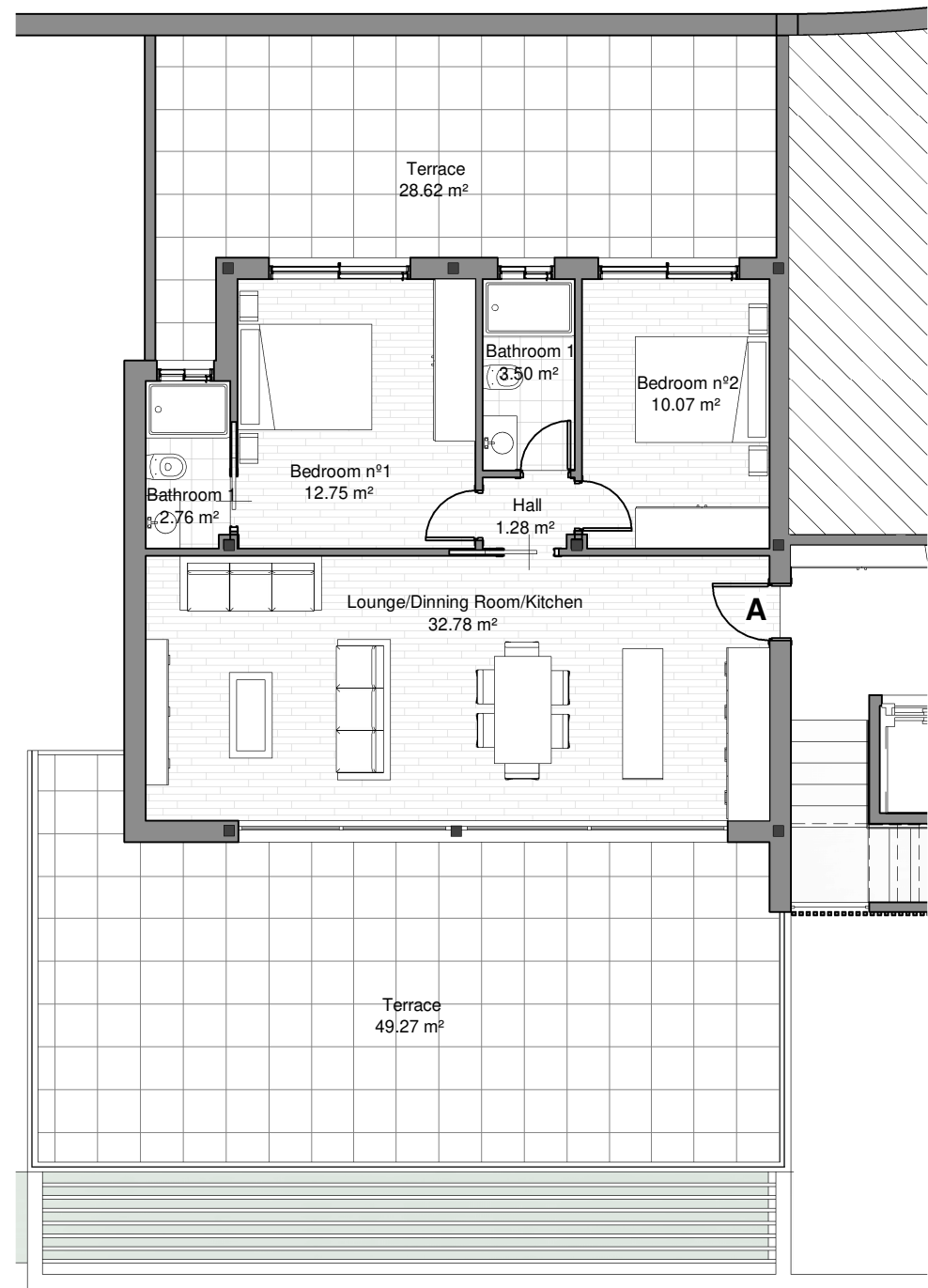
ACCORDING TO DECREE 218/2005			
Useful interior area (m2)	Useful exterior area. (10% int.)* (m²)	Total useful area (m²)	Total m2 Construction Inclu. Common Areas (m2)
68,07	6,81	74,88	103,48

**According to Decree 218/2005, the useful surface area of private outdoor spaces will count at 50% (limited to 10% of the useful outdoor surface area).*

The information and graphic material that appear in this brochure are merely indicative, have no contractual value and may be subject to variations due to technical or legal requirements or at the initiative of the Faculty Management. The landscaping, decoration and furniture are merely decorative and not binding. The rest of the information referring to Decree 218/2005 of the Junta de Andalucía is available in our offices for consultation.

PORTAL 1. FLOOR -1 APARTMENT A.

Distribution Floor -1 Apartment A



LOCATION OF FRONT ELEVATION AND FLOOR PLAN



PORTAL 1 - FLOOR -1 APARTMENT A	
Distribution	Surface Area (m²)
Lounge/Dinning Room/Kitchen	32,78
Hall	1,28
Bedroom nº1	12,75
Bedroom nº2	10,07
Bathroom nº 1	2,76
Bathroom nº 2	3,50
TOTAL USEFUL AREA	63,14

Total Terrace Surface Area	61,38
----------------------------	-------

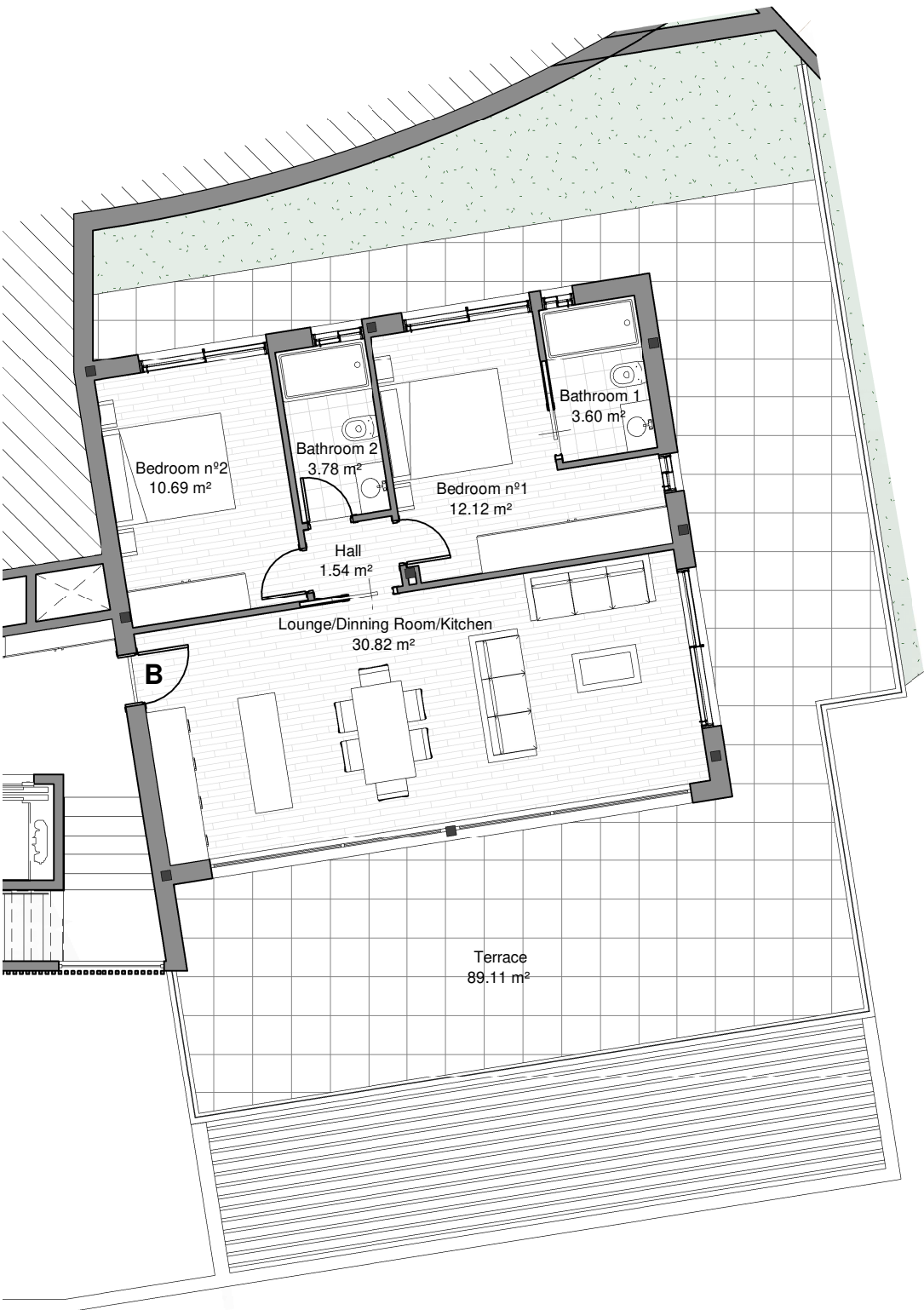
ACCORDING TO DECREE 218/2005			
Useful interior area (m2)	Useful exterior area. (10% int.)* (m²)	Total useful area (m²)	Total m2 Construction Inclu. Common Areas (m2)
63,14	6,31	69,45	95,98

**According to Decree 218/2005, the useful surface area of private outdoor spaces will count at 50% (limited to 10% of the useful outdoor surface area).*

The information and graphic material that appear in this brochure are merely indicative, have no contractual value and may be subject to variations due to technical or legal requirements or at the initiative of the Faculty Management. The landscaping, decoration and furniture are merely decorative and not binding. The rest of the information referring to Decree 218/2005 of the Junta de Andalucía is available in our offices for consultation.

PORTAL 1. FLOOR -1 APARTMENT B.

Distribution Floor -1 Apartment B



LOCATION OF FRONT ELEVATION AND FLOOR PLAN



PORTAL 1 - FLOOR -1 APARTMENT B	
Distribution	Surface Area (m²)
Lounge/Dinning Room/Kitchen	30,82
Hall	1,54
Bathroom nº 1	3,60
Bathroom nº 2	3,78
Bedroom nº1	12,12
Bedroom nº2	10,69
TOTAL USEFUL AREA	62,55

Total Terrace Surface Area	89,11
----------------------------	-------

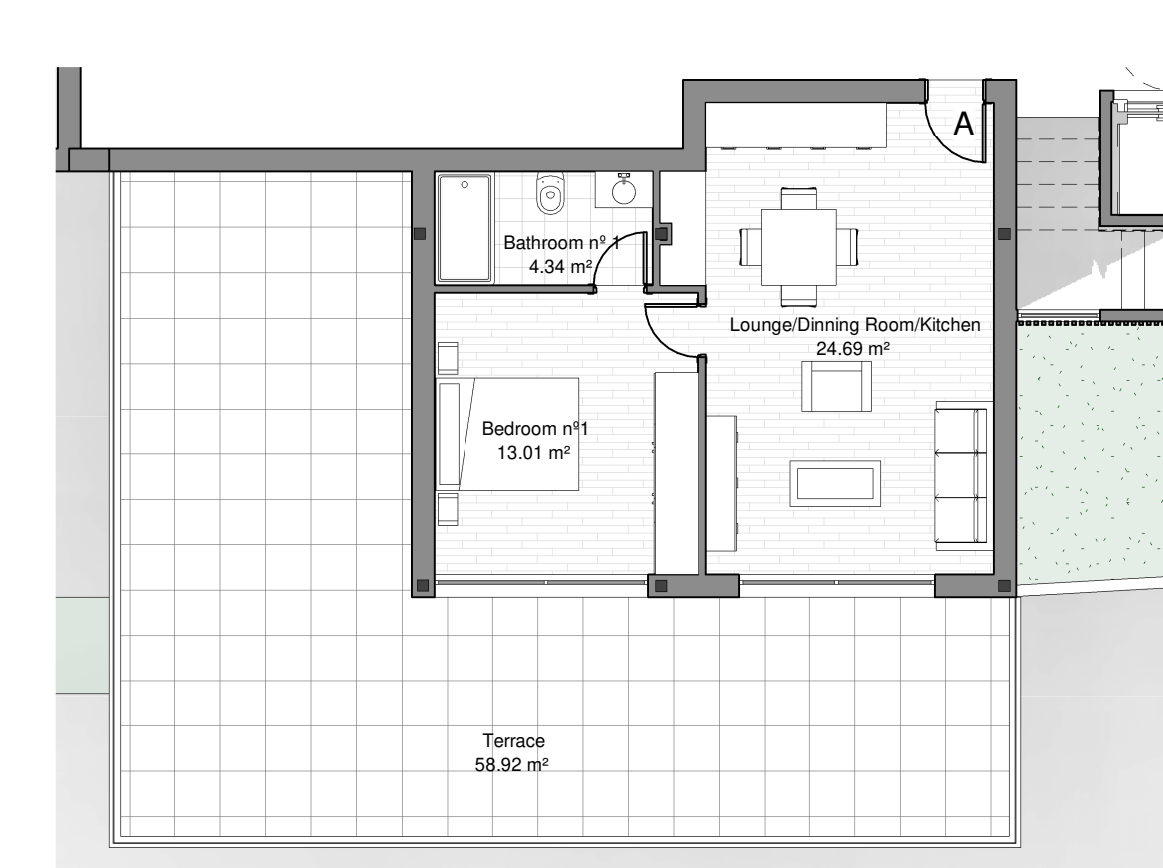
ACCORDING TO DECREE 218/2005			
Useful interior area (m2)	Useful exterior area. (10% int.)* (m²)	Total useful area (m²)	Total m2 Construction Inclu. Common Areas (m2)
62,55	6,26	68,81	95,09

**According to Decree 218/2005, the useful surface area of private outdoor spaces will count at 50% (limited to 10% of the useful outdoor surface area).*

The information and graphic material that appear in this brochure are merely indicative, have no contractual value and may be subject to variations due to technical or legal requirements or at the initiative of the Faculty Management. The landscaping, decoration and furniture are merely decorative and not binding. The rest of the information referring to Decree 218/2005 of the Junta de Andalucía is available in our offices for consultation.

PORTAL 1. FLOOR -2 APARTMENT A.

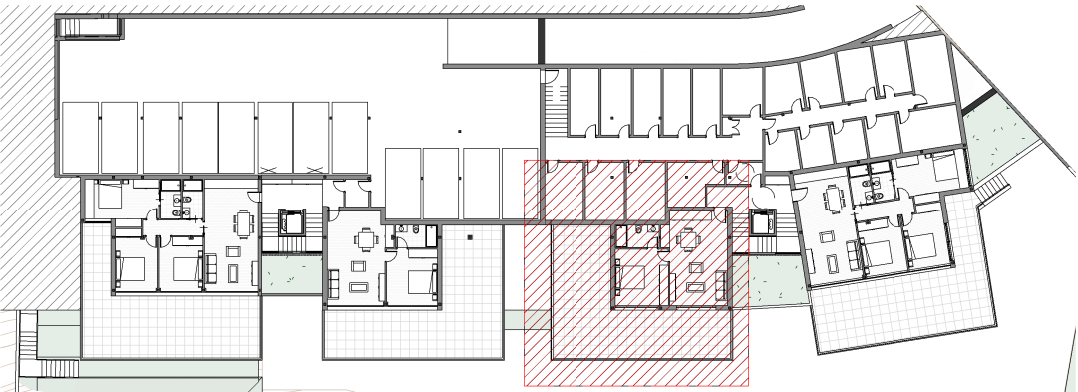
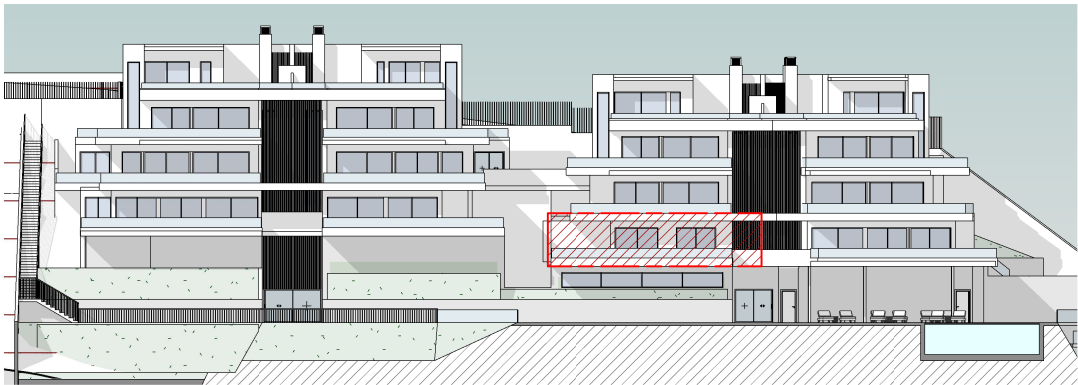
Distribution Floor -2 Apartment A



PORTAL 1 - FLOOR -2 APARTMENT A	
Distribution	Surface Area (m²)
Lounge/Dinning Room/Kitchen	24,69
Bathroom nº 1	4,34
Bedroom nº1	13,01
TOTAL USEFUL AREA	42,04

Total Terrace Surface Area	58,91
----------------------------	-------

LOCATION OF FRONT ELEVATION AND FLOOR PLAN



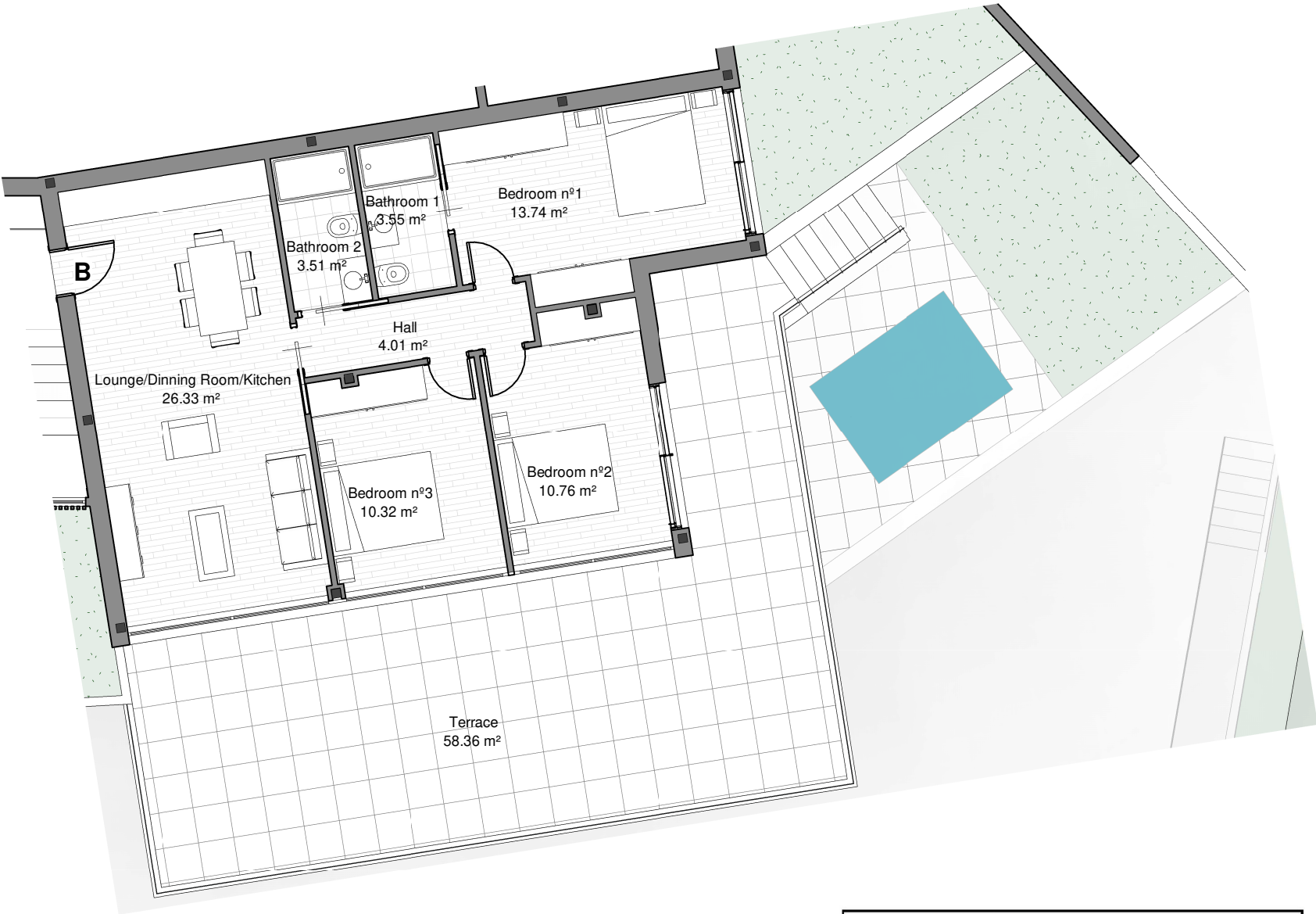
ACCORDING TO DECREE 218/2005			
Useful interior area (m2)	Useful exterior area. (10% int.)* (m²)	Total useful area (m²)	Total m2 Construction Inclu. Common Areas (m2)
42,04	4,20	46,24	63,91

**According to Decree 218/2005, the useful surface area of private outdoor spaces will count at 50% (limited to 10% of the useful outdoor surface area).*

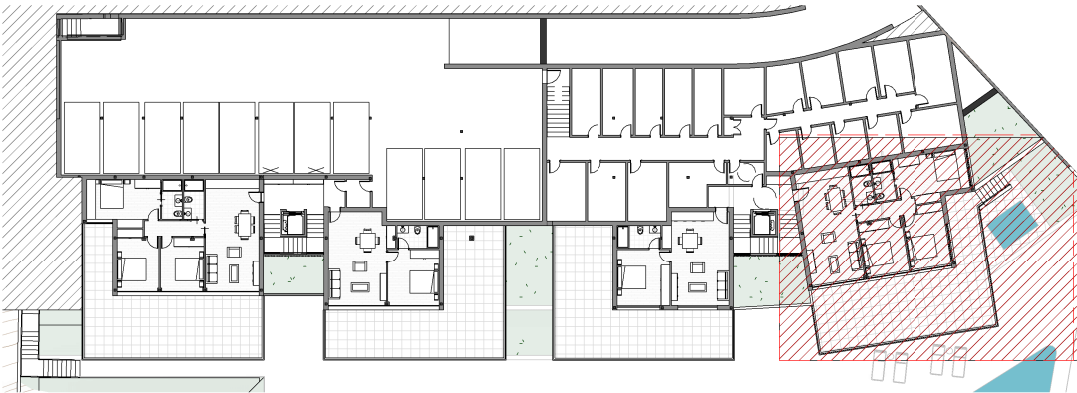
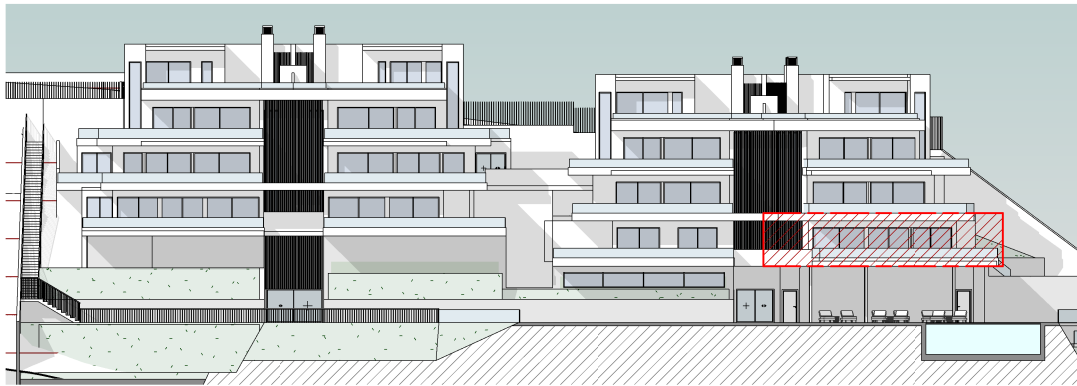
The information and graphic material that appear in this brochure are merely indicative, have no contractual value and may be subject to variations due to technical or legal requirements or at the initiative of the Faculty Management. The landscaping, decoration and furniture are merely decorative and not binding. The rest of the information referring to Decree 218/2005 of the Junta de Andalucía is available in our offices for consultation.

PORTAL 1. FLOOR -2 APARTMENT B.

Distribution Floor -2 Apartment B



LOCATION OF FRONT ELEVATION AND FLOOR PLAN



PORTAL 1 - FLOOR -2 APARTMENT B	
Distribution	Surface Area (m²)
Lounge/Dinning Room/Kitchen	26,34
Bathroom nº 1	3,55
Bathroom nº 2	3,51
Hall	4,01
Bedroom nº1	13,74
Bedroom nº2	10,76
Bedroom nº3	10,33
TOTAL USEFUL AREA	72,24

Total Terrace Surface Area	58,36
----------------------------	-------

ACCORDING TO DECREE 218/2005			
Useful interior area (m2)	Useful exterior area. (10% int.)* (m²)	Total useful area (m²)	Total m2 Construction Inclu. Common Areas (m2)
72,24	7,22	79,46	109,82

**According to Decree 218/2005, the useful surface area of private outdoor spaces will count at 50% (limited to 10% of the useful outdoor surface area).*

The information and graphic material that appear in this brochure are merely indicative, have no contractual value and may be subject to variations due to technical or legal requirements or at the initiative of the Faculty Management. The landscaping, decoration and furniture are merely decorative and not binding. The rest of the information referring to Decree 218/2005 of the Junta de Andalucía is available in our offices for consultation.