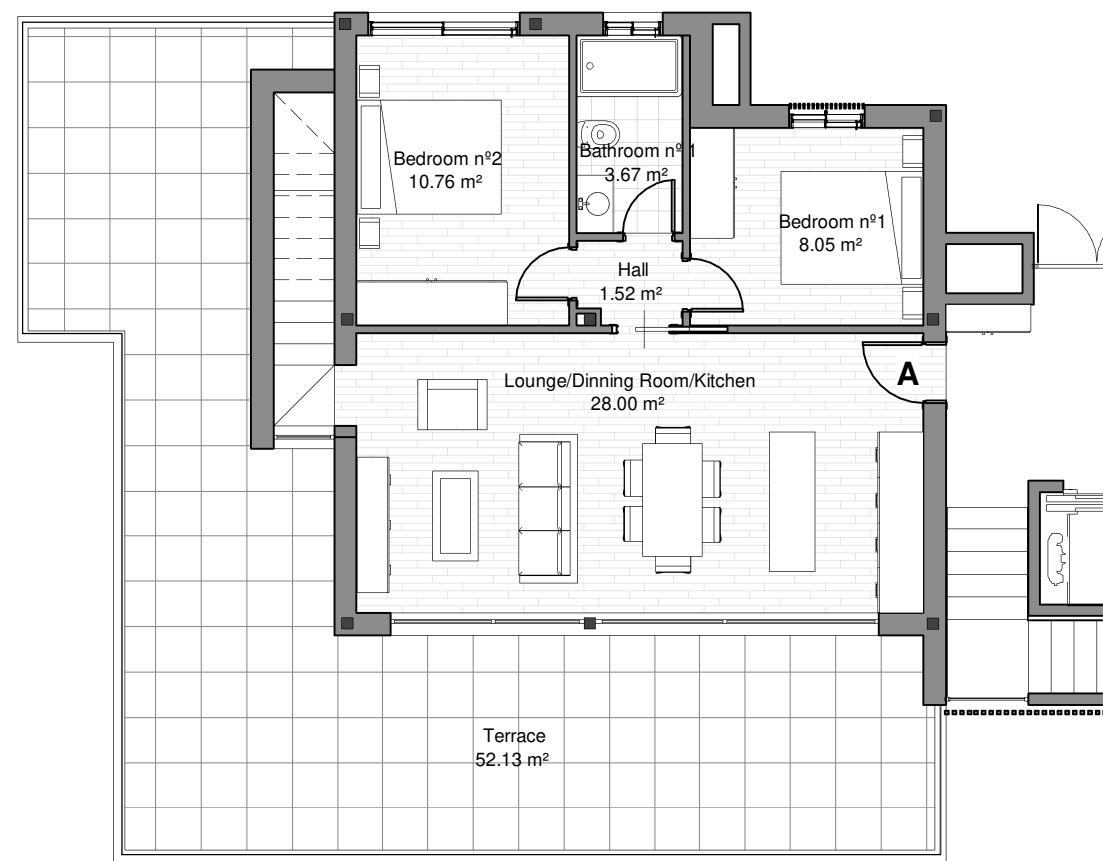
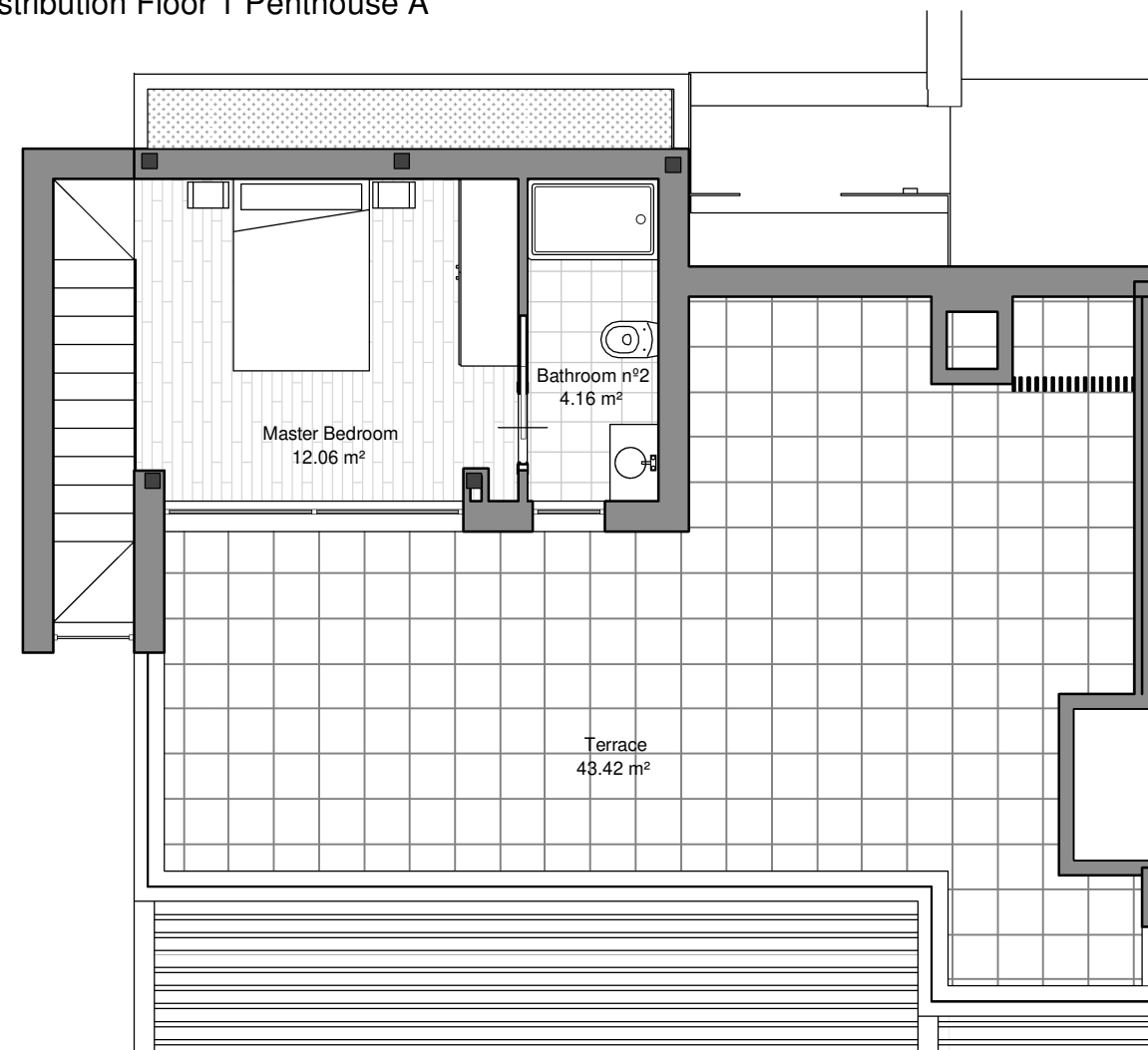


PORTAL 2. PENTHOUSE A.

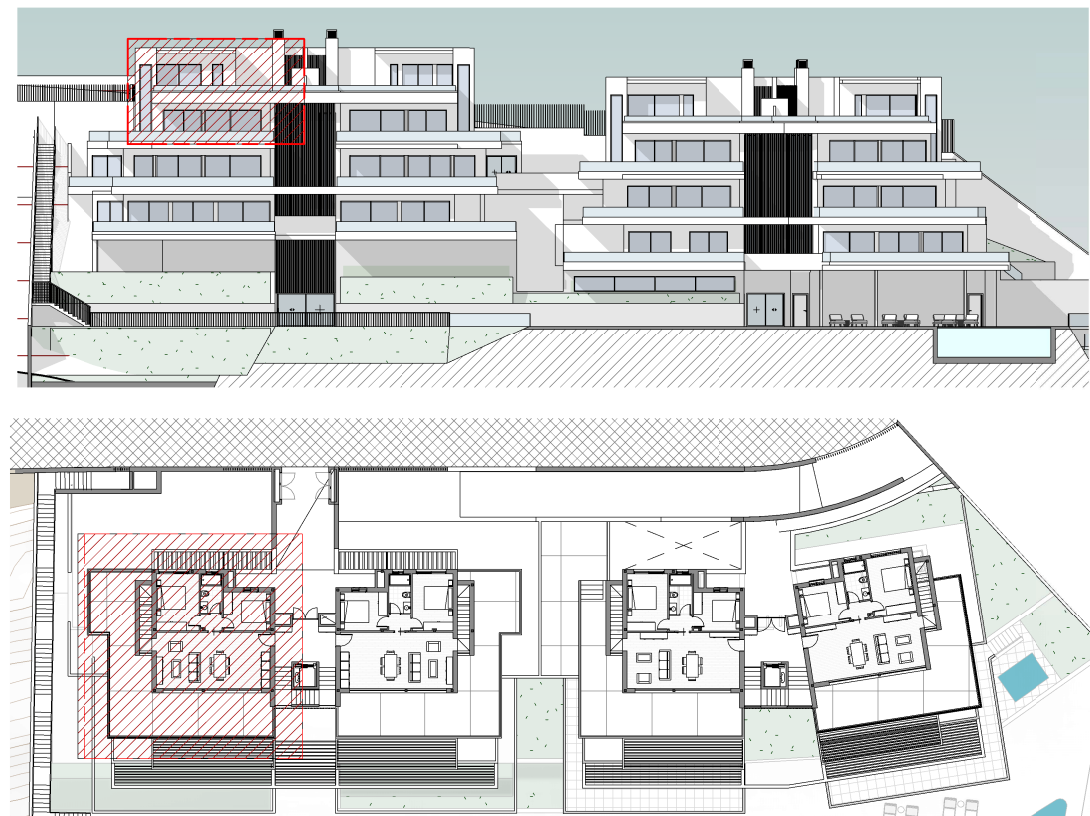
Distribution Floor 0 Penthouse A



Distribution Floor 1 Penthouse A



LOCATION OF FRONT ELEVATION AND FLOOR PLAN



PORTAL 2 - PENTHOUSE A	
Distribution	Surface Area (m²)
Lounge/Dinning Room/Kitchen	28,00
Hall	1,52
Bathroom nº 1	3,67
Bedroom nº1	8,05
Bedroom nº2	10,76
Master Bedroom	12,06
Bathroom nº 2	4,16
TOTAL USEFUL AREA	68,22

ACCORDING TO DECREE 218/2005			
Useful interior area (m2)	Useful exterior area. (10% int.)* (m²)	Total useful area (m²)	Total m2 Construction Inclu. Common Areas (m2)
68,22	6,82	75,04	103,71

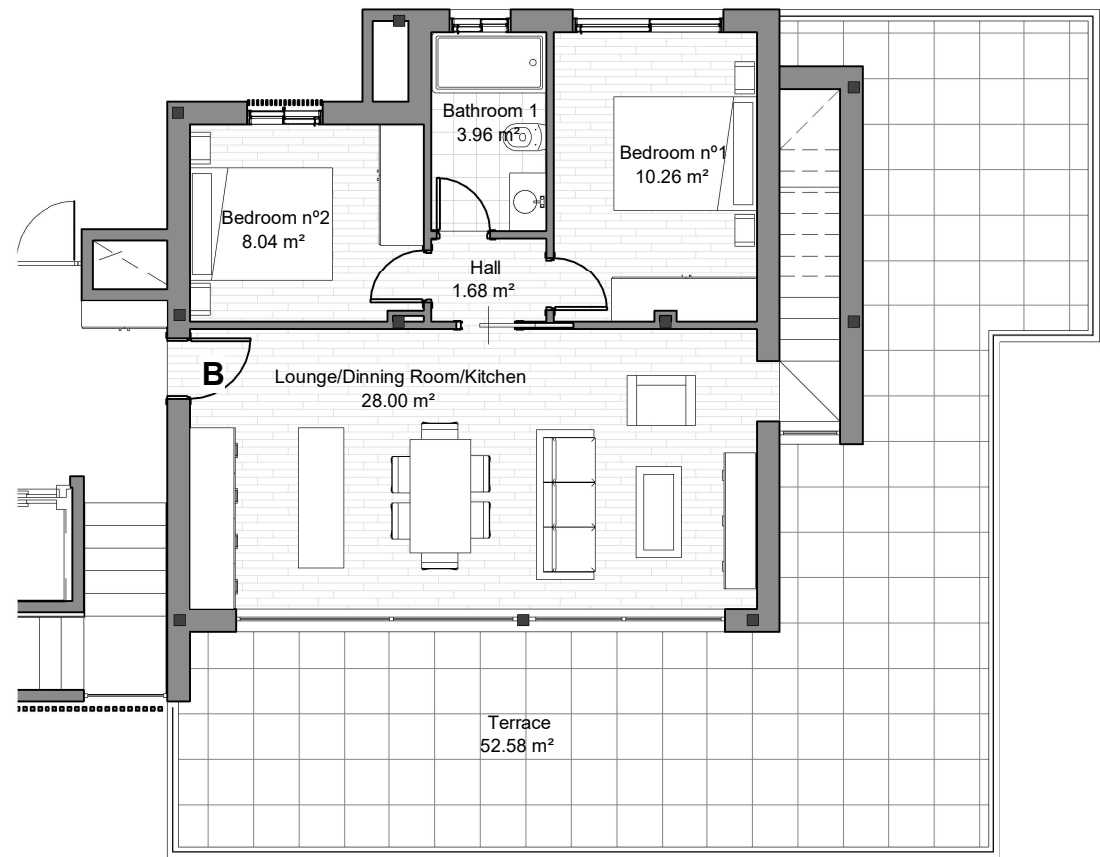
**According to Decree 218/2005, the useful surface area of private outdoor spaces will count at 50% (limited to 10% of the useful outdoor surface area).*

Total Terrace Surface Area	95,53
----------------------------	-------

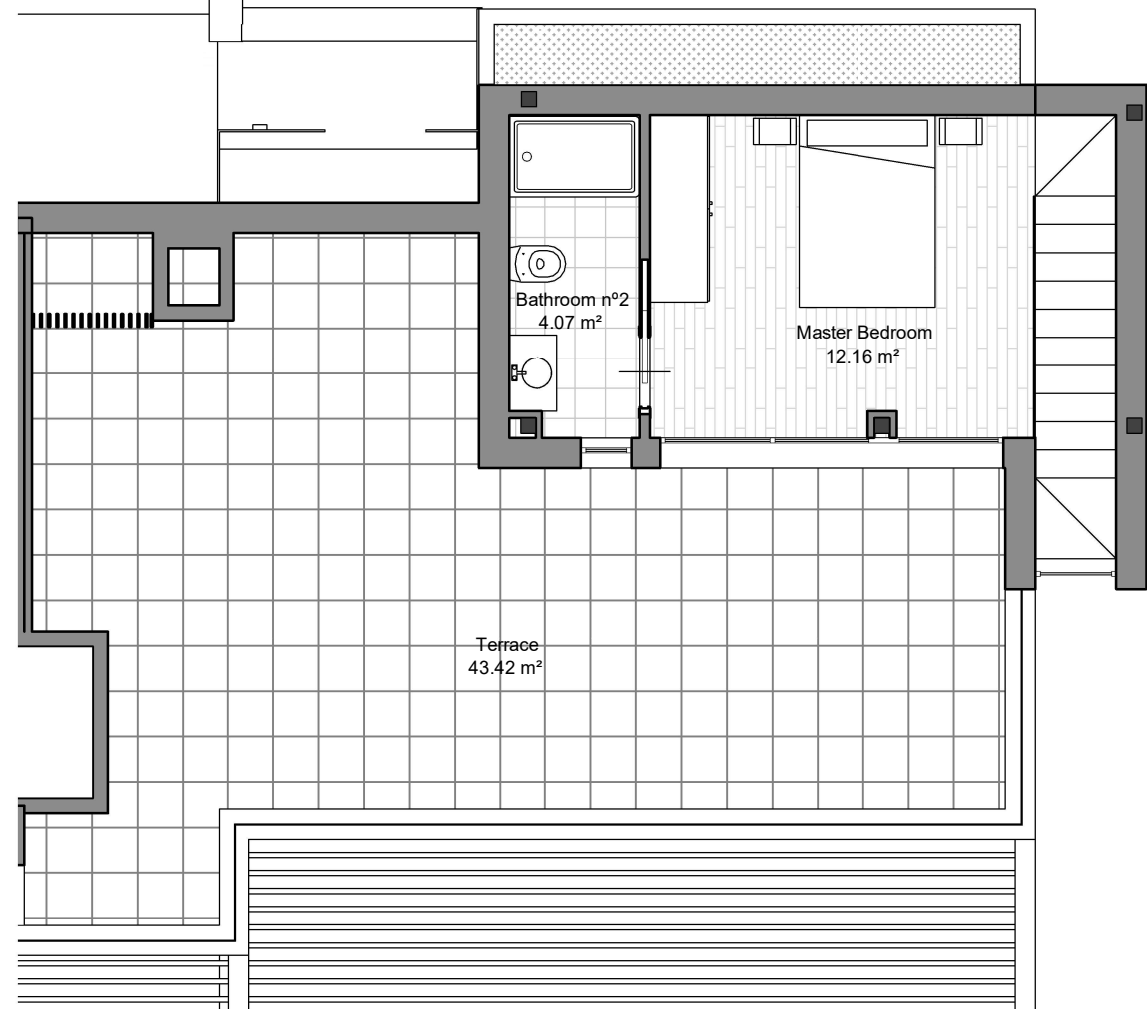
The information and graphic material that appear in this brochure are merely indicative, have no contractual value and may be subject to variations due to technical or legal requirements or at the initiative of the Faculty Management. The landscaping, decoration and furniture are merely decorative and not binding. The rest of the information referring to Decree 218/2005 of the Junta de Andalucía is available in our offices for consultation.

PORTAL 2. PENTHOUSE B

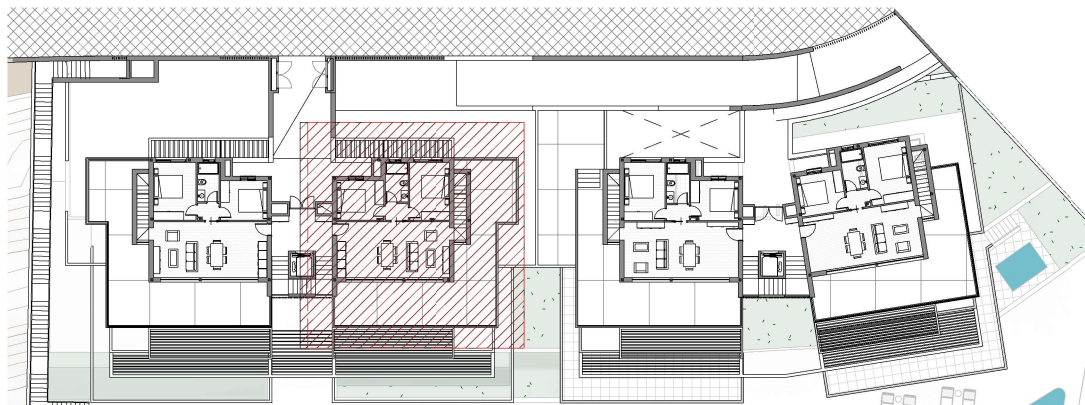
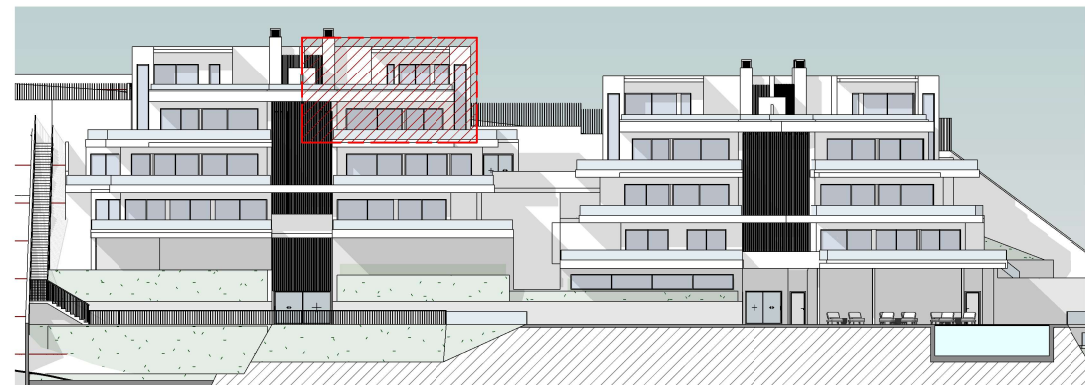
Distribution Floor 0 Penthouse B



Distribution Floor 1 Penthouse B



LOCATION OF FRONT ELEVATION AND FLOOR PLAN



PORTAL 2 - PENTHOUSE B	
Distribution	Surface Area (m²)
Lounge/Dinning Room/Kitchen	28,00
Hall	1,68
Bathroom nº 1	3,96
Bedroom nº1	10,26
Bedroom nº2	8,04
Master Bedroom	12,24
Bathroom nº 2	4,07
TOTAL USEFUL AREA	68,25

Total Terrace Surface Area	95,98
----------------------------	-------

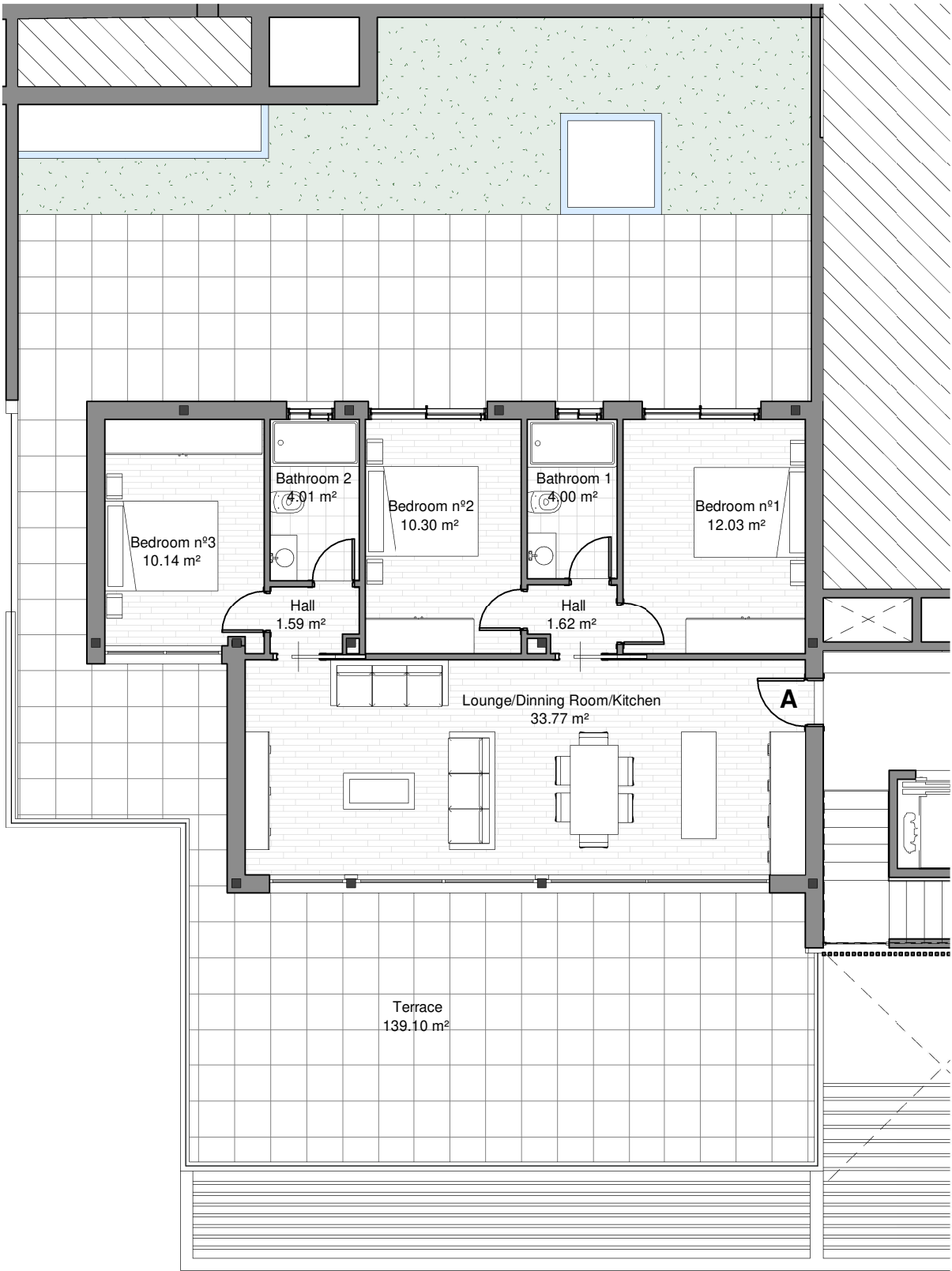
ACCORDING TO DECREE 218/2005			
Useful interior area (m2)	Useful exterior area. (10% int.)* (m²)	Total useful area (m²)	Total m2 Construction Inclu. Common Areas (m2)
68,25	6,83	75,08	103,75

**According to Decree 218/2005, the useful surface area of private outdoor spaces will count at 50% (limited to 10% of the useful outdoor surface area).*

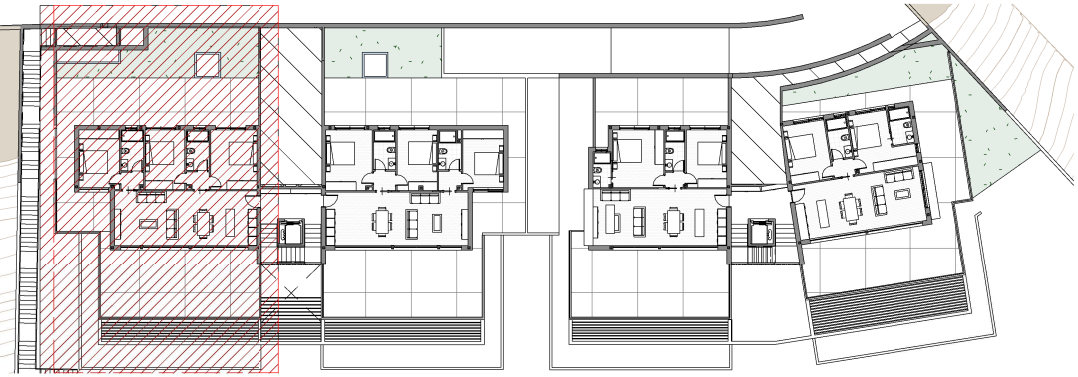
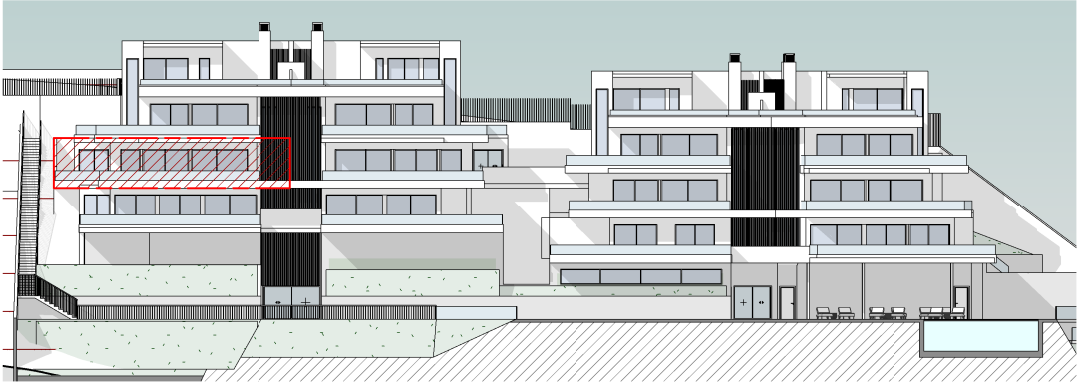
The information and graphic material that appear in this brochure are merely indicative, have no contractual value and may be subject to variations due to technical or legal requirements or at the initiative of the Faculty Management. The landscaping, decoration and furniture are merely decorative and not binding. The rest of the information referring to Decree 218/2005 of the Junta de Andalucía is available in our offices for consultation.

PORTAL 2. FLOOR -1 APARTMENT A.

Distribution Floor -1 Apartment A



LOCATION OF FRONT ELEVATION AND FLOOR PLAN



PORTAL 2 - FLOOR -1 APARTMENT A	
Distribution	Surface Area (m²)
Lounge/Dinning Room/Kitchen	33,77
Hall	1,62
Bathroom nº 1	4,00
Bedroom nº1	12,03
Bedroom nº2	10,30
Distributor	1,59
Bathroom nº 2	4,01
Bedroom nº3	10,14
TOTAL USEFUL AREA	77,46

ACCORDING TO DECREE 218/2005			
Useful interior area (m2)	Useful exterior area. (10% int.)* (m²)	Total useful area (m²)	Total m2 Construction Inclu. Common Areas (m2)
77,46	7,75	85,21	117,75

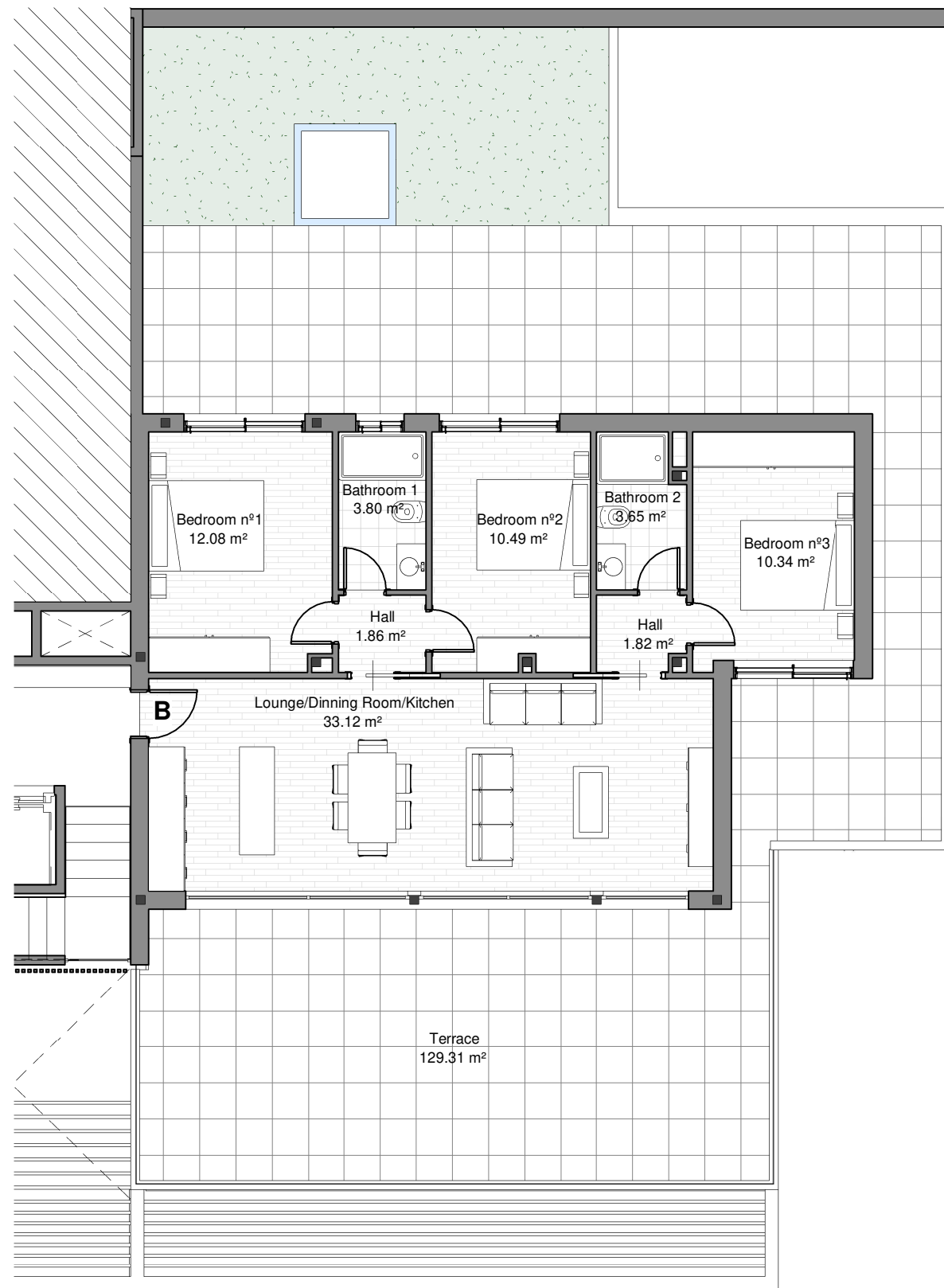
*According to Decree 218/2005, the useful surface area of private outdoor spaces will count at 50% (limited to 10% of the useful outdoor surface area).

Total Terrace Surface Area	137,73
----------------------------	--------

The information and graphic material that appear in this brochure are merely indicative, have no contractual value and may be subject to variations due to technical or legal requirements or at the initiative of the Faculty Management. The landscaping, decoration and furniture are merely decorative and not binding. The rest of the information referring to Decree 218/2005 of the Junta de Andalucía is available in our offices for consultation.

PORTAL 2. FLOOR -1 APARTMENT B.

Distribution Floor -1 Apartment B



LOCATION OF FRONT ELEVATION AND FLOOR PLAN



PORTAL 2 - FLOOR -1 APARTMENT B	
Distribution	Surface Area (m²)
Lounge/Dinning Room/Kitchen	33,12
Hall	1,86
Bathroom nº 1	3,80
Bedroom nº1	12,08
Bedroom nº2	10,49
Distributor	1,82
Bathroom nº 2	3,65
Bedroom nº3	10,34
TOTAL USEFUL AREA	77,16

Total Terrace Surface Area	129,28
----------------------------	--------

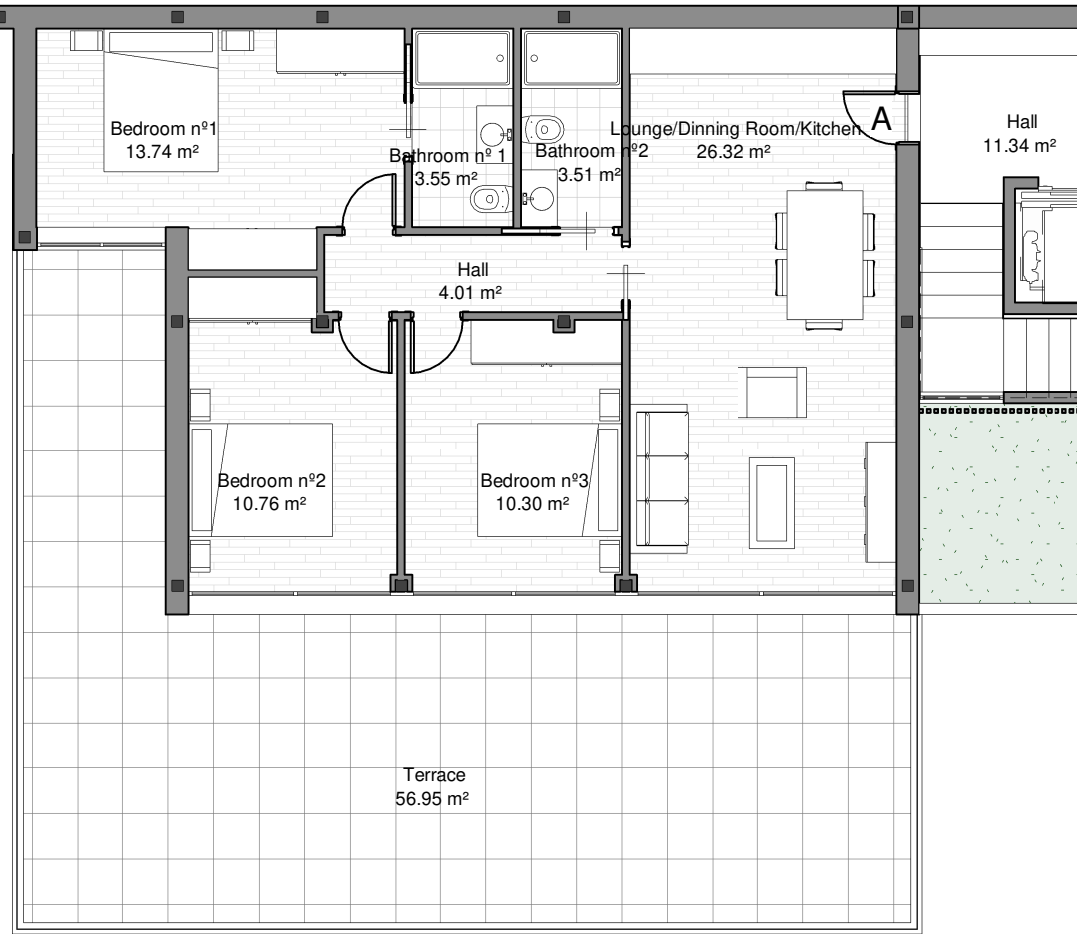
ACCORDING TO DECREE 218/2005			
Useful interior area (m2)	Useful exterior area. (10% int.)* (m²)	Total useful area (m²)	Total m2 Construction Inclu. Common Areas (m2)
77,16	7,72	84,88	117,30

*According to Decree 218/2005, the useful surface area of private outdoor spaces will count at 50% (limited to 10% of the useful outdoor surface area).

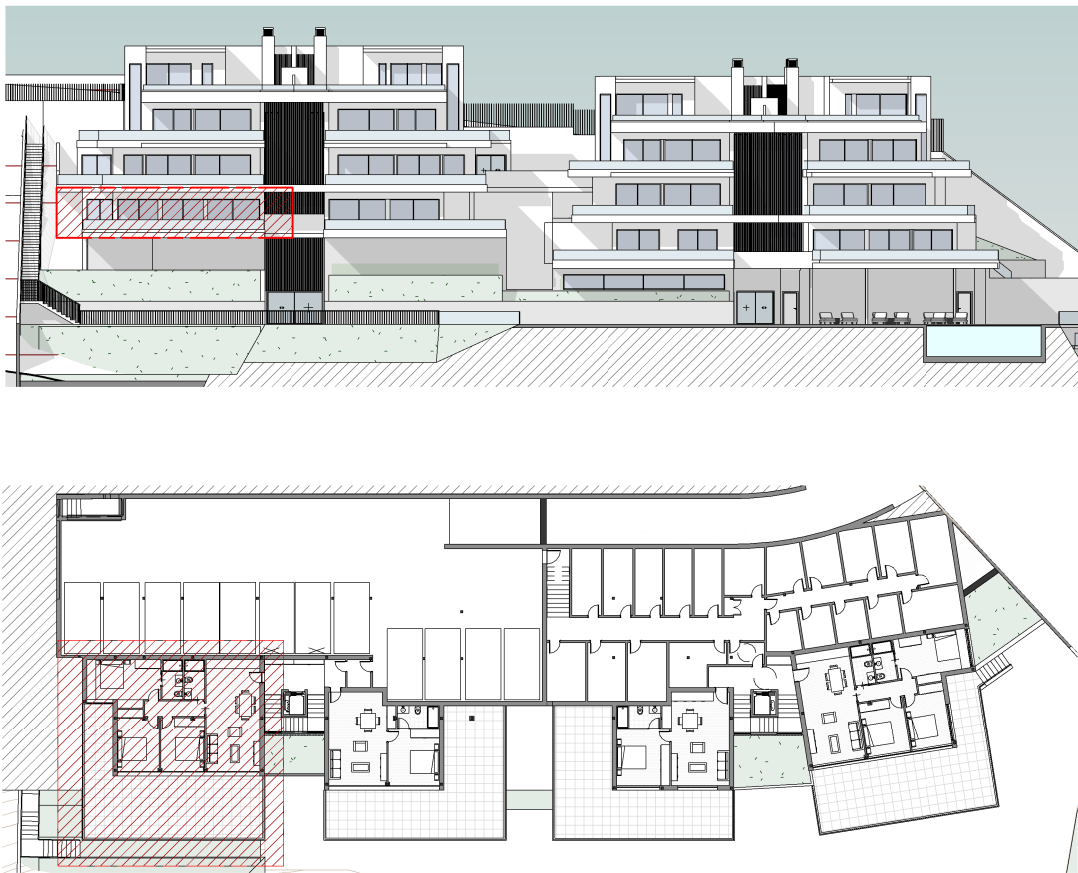
The information and graphic material that appear in this brochure are merely indicative, have no contractual value and may be subject to variations due to technical or legal requirements or at the initiative of the Faculty Management. The landscaping, decoration and furniture are merely decorative and not binding. The rest of the information referring to Decree 218/2005 of the Junta de Andalucía is available in our offices for consultation.

PORTAL 2. FLOOR -2 APARTMENT A.

Distribution Floor -2 Apartment A



LOCATION OF FRONT ELEVATION AND FLOOR PLAN



PORTAL 2 - FLOOR -2 APARTMENT A	
Distribution	Surface Area (m²)
Lounge/Dinning Room/Kitchen	26,32
Hall	4,01
Bathroom nº 1	3,55
Bathroom nº 2	3,51
Bedroom nº1	13,74
Bedroom nº2	10,76
Bedroom nº3	10,30
TOTAL USEFUL AREA	72,19

Total Terrace Surface Area	56,95
----------------------------	-------

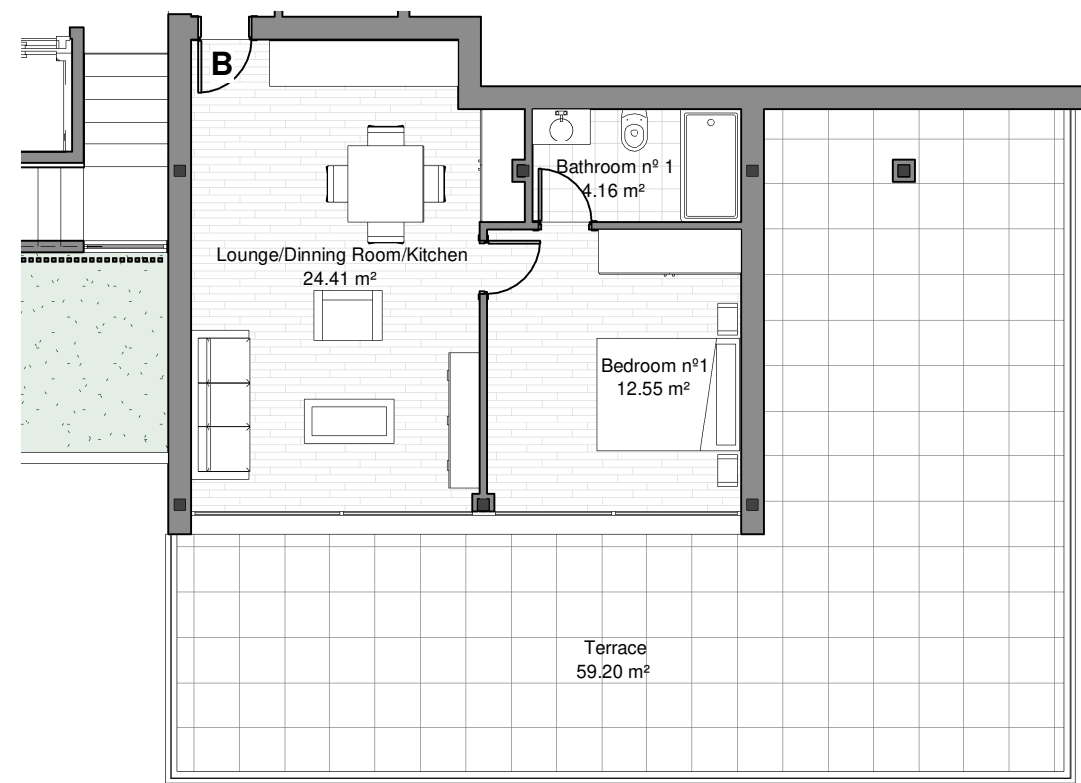
ACCORDING TO DECREE 218/2005			
Useful interior area (m2)	Useful exterior area. (10% int.)* (m²)	Total useful area (m²)	Total m2 Construction Inclu. Common Areas (m2)
72,19	7,22	79,41	109,74

**According to Decree 218/2005, the useful surface area of private outdoor spaces will count at 50% (limited to 10% of the useful outdoor surface area).*

The information and graphic material that appear in this brochure are merely indicative, have no contractual value and may be subject to variations due to technical or legal requirements or at the initiative of the Faculty Management. The landscaping, decoration and furniture are merely decorative and not binding. The rest of the information referring to Decree 218/2005 of the Junta de Andalucía is available in our offices for consultation.

PORTAL 2. FLOOR -2 APARTMENT B.

Distribution Floor -2 Apartment B



PORTAL 2 - FLOOR -2 APARTMENT B	
Distribution	Surface Area (m²)
Lounge/Dinning Room/Kitchen	24,41
Bathroom nº 1	4,16
Bedroom nº1	12,55
TOTAL USEFUL AREA	41,12

Total Terrace Surface Area	59,20
----------------------------	-------

LOCATION OF FRONT ELEVATION AND FLOOR PLAN



ACCORDING TO DECREE 218/2005			
Useful interior area (m2)	Useful exterior area. (10% int.)* (m²)	Total useful area (m²)	Total m2 Construction Inclu. Common Areas (m2)
41,12	4,11	45,23	62,51

**According to Decree 218/2005, the useful surface area of private outdoor spaces will count at 50% (limited to 10% of the useful outdoor surface area).*

The information and graphic material that appear in this brochure are merely indicative, have no contractual value and may be subject to variations due to technical or legal requirements or at the initiative of the Faculty Management. The landscaping, decoration and furniture are merely decorative and not binding. The rest of the information referring to Decree 218/2005 of the Junta de Andalucía is available in our offices for consultation.